

Technical Data Sheet

HAGMANS NORDIC

Motor Spray silver

Art. No. 2233121

Product

Description / Purpose

Easy to apply, quick-drying lacquer based on nitro combination resins with good levelling properties. For colour enhancement of car parts such as engine blocks, valve covers, intake manifolds, air filters and carburettors. After drying, a scratch-resistant and non-heat-insulating paint film is formed.

Properties

- Protection against corrosion and soiling in the engine area
- High petrol and abrasion resistance
- High yield
- Good levelling
- Fast drying
- Scratch resistant

Material base

Nitro combination paint

Colour

silver

VOC Value (EU)

ca. 710 g/l

Substrate

Metal, paintable plastics
(cleaned, free of dust and grease)

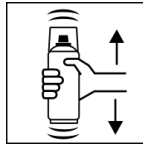
Processing

Protection measures

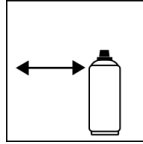


Wear personal protection equipment.
(gloves / goggles)

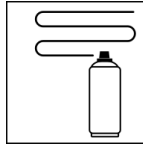
For more information, see safety data sheet.

Shake

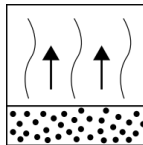
Shake can thoroughly for 2 minutes
- starting from when the mixing balls are heard.

Spraying distance

15 cm - 25 cm

Spray passes

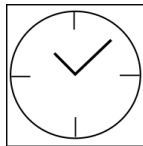
2 spray coats: approx. 50 - 60 μm
Crossing means spraying on an initially horizontal and then a vertical layer.

Flash-off time

Flash-off time: approx. 2 - 3 min between the spray coat.

Processing conditions

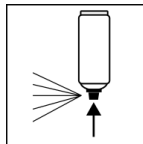
Optimum application at 18° C - 25° C.
The substrate must be dry and free of dust and grease.

Drying

dust dry: after 10 - 20 min
dry to touch: after 2 - 3 hour
fully dried: after 12 hours

Continue

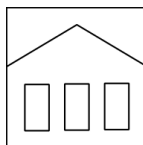
Recoatable with itself at any time.

Finish

After painting, turn the can upside down and spray for 3 - 5 seconds to clean the valve.

Additional Information**Important Information**

Avoid bumps, friction and impact.
Do not spray on synthetic resin painted surfaces, as the paint may pull up.

Shelf Life

The can is standing upright between 15 - 25° C and a relative humidity of not more than 60 %, stored and transported dry and protected from chemical and mechanical influences.

The safety instructions on the can as well as all legal provisions of the storage location to note.

Disposal



The completely emptied spray cans must be disposed of in the recycling system. Cans with hardened material must be disposed of as special waste.

Note

Before use, the safety instructions must always be read carefully and observed.

The contents in this technical data sheet were created with great care and reflect our current state of knowledge. They provide the user with application-specific information and do not promise certain properties. The information is non-binding and we accept no liability for its integrity, accuracy and completeness. They do not relieve the user of their duty to check the suitability of our product for the intended purpose. The warnings printed on our labels must be respected. Our brands and patents are protected by copyright. All rights reserved We reserve the right to update, amend or supplement the content of the information without prior notice.