

Technical Data Sheet

Peter Kwasny GmbH, Heilbronner Str. 96
74831 Gundelsheim / Germany
Phone: +496269 95-0, Fax: +496269 95-80
www.spraymax.com / www.kwasny.com / info@kwasny.de

RACING 2-layer clear coat gloss 400 ml Art. No. 288017



Product

Description / Purpose

Racing 2-coat clear coat is a fast drying, glossy clear coat for the long-term sealing of objects made of metal, wood, stone, glass, ceramics, clay, paper, most plastics or for painting over objects painted with Auto-K paint sprays.

Properties

- Fast drying
- Brilliantly shiny
- Good chemical resistance
- Free of heavy metals: no lead, cadmium, chrome

Material base

Nitro combination paint

Colour

transparent

Gloss level

high gloss

VOC Value (EU)

91,36

Substrate

Metal (cleaned, sanded, free of dust and grease)

various plastics

Here before in an inconspicuous place Check compatibility and liability. Possibly with a pre-prime a suitable plastic adhesion promoter.

Wood, stone, glass, ceramic, clay, paper

Processing

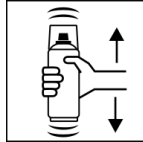
Protection measures



Wear personal protection equipment.
(gloves / goggles)

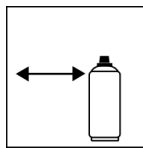
For more information, see safety data sheet.

Shake



Shake can thoroughly for 2 minutes
- starting from when the mixing balls are heard.

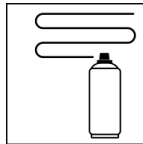
Spraying distance



15 cm - 25 cm

Hold the can as upright as possible.

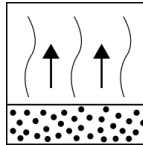
Spray passes



2 spray coats: approx. 30 - 40 µm

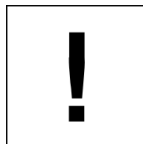
Crossing means spraying on an initially horizontal
and then a vertical layer.

Flash-off time



Flash time: approx. 3 - 5 min between the
spray coat.

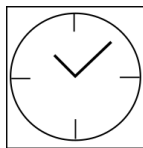
Processing conditions



Optimum application at 18° C - 25° C.

The substrate must be dry and free of dust and
grease.

Drying



dust dry: after 5 - 10 min

dry to touch: after 30 - 40 min

fully dried: after 24 hours

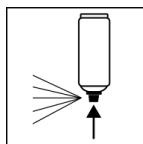
Continue

Paintwork:

1. Racing anti-corrosion primer
2. Racing universal primer
3. Top coat
4. Racing 2 coat clear coat

Recoatable with itself at any time.

Finish



After painting, turn the can upside down and spray
for 3 - 5 seconds to clean the valve.

Additional Information

Important Information

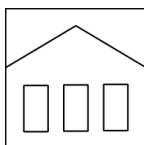


Avoid bumps, friction and impact.

Please note!

In general, do not paint over synthetic resin paints, as the paint may pull up.

Shelf Life



The can must be stored and transported upright, dry and protected from chemical and mechanical influences at a temperature between 15 and 25° C.

The safety instructions on the can and all legal regulations at the storage location must be observed.

Disposal



The completely emptied spray cans must be disposed of in the recycling system. Cans with hardened material must be disposed of as special waste.

Note

Before use, the safety instructions must always be read carefully and observed.

The contents in this technical data sheet were created with great care and reflect our current state of knowledge. They provide the user with application-specific information and do not promise certain properties. The information is non-binding and we accept no liability for its integrity, accuracy and completeness. They do not relieve the user of their duty to check the suitability of our product for the intended purpose. The warnings printed on our labels must be respected. Our brands and patents are protected by copyright. All rights reserved We reserve the right to update, amend or supplement the content of the information without prior notice.