

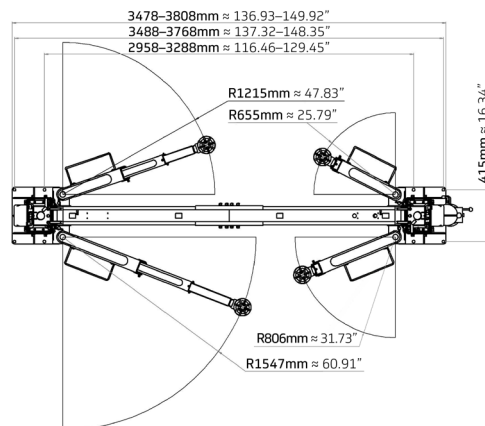
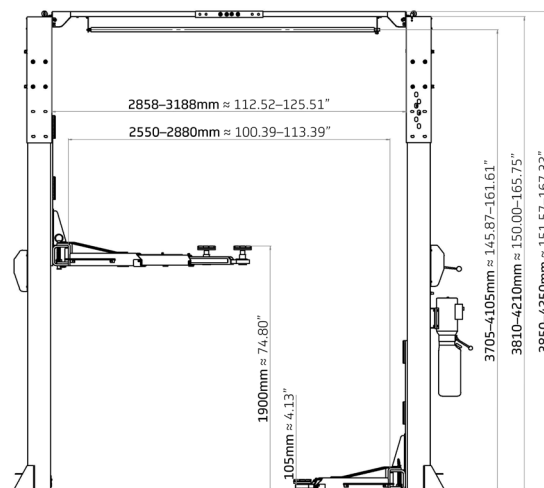


## SPECIFICATIONS

LIFTING CAPACITY	<b>4.5T</b> ≈ 9,920.79 lb
LIFTING HEIGHT	<b>≤ 1900mm</b> ≈ ≤ 74.80"
SYSTEM PRESSURE	<b>20Mpa</b>
MOTOR POWER	<b>2.2KW</b>
VOLTAGE	<b>380/220V</b>
NET WEIGHT	<b>0.75T</b> ≈ 1,653.46 lb
TRAY MINIMUM HEIGHT	<b>100mm</b> ≈ 3.94"
PASSWAY SPACE	<b>2500/2830mm</b> ≈ 98.43/111.42"

## Two-post Lift

- Electro-hydraulic two-post lift with asymmetric arms, designed to ensure maximum stability and flexibility.
- One-piece bent steel columns, powder-coated for long-lasting durability and reduced maintenance.
- Three-stage telescopic arms for precise access to lifting points on cars, SUVs, EVs, and vans
- Four rubber door stops to protect the bodywork during operations.
- 80 mm spacers with dedicated brackets to extend lifting range.
- Advanced safety system: anti-explosion oil pipes, automatic mechanical lock, and self-locking arms to eliminate risks.
- Intuitive electric control panel with integrated safety unlocking for fast and reliable operation
- Limit bar to prevent damage to high vehicles.
- Dual hydraulic cylinders for consistent performance even under intensive use
- Adjustable height (3705–4105 mm) and width (2858–3188 mm) to accommodate large vehicles.
- Steel wire ropes Ø11 mm to guarantee maximum safety.
- Lifting capacity 4.5 t, minimum pad height 100 mm, system pressure 20 MPa, motor power 2.2 kW, voltage 380/220 V, net weight 750 kg.



Reliability and flexibility: designed to ensure compatibility with electric vehicles and SUVs, full underbody access thanks to the clear floor design, and the option to integrate dedicated accessories. Its robust structure and adjustable height and width guarantee versatility for modern workshops.