



**2019** PREMIUM SELECTION PRODUCTS



# THIS IS AN INTERACTIVE PRODUCTS PACKAGE

BY CLICKING ON PRODUCT NAME YOU  
CAN SKIP DIRECTLY TO ITS PAGE

## INDEX

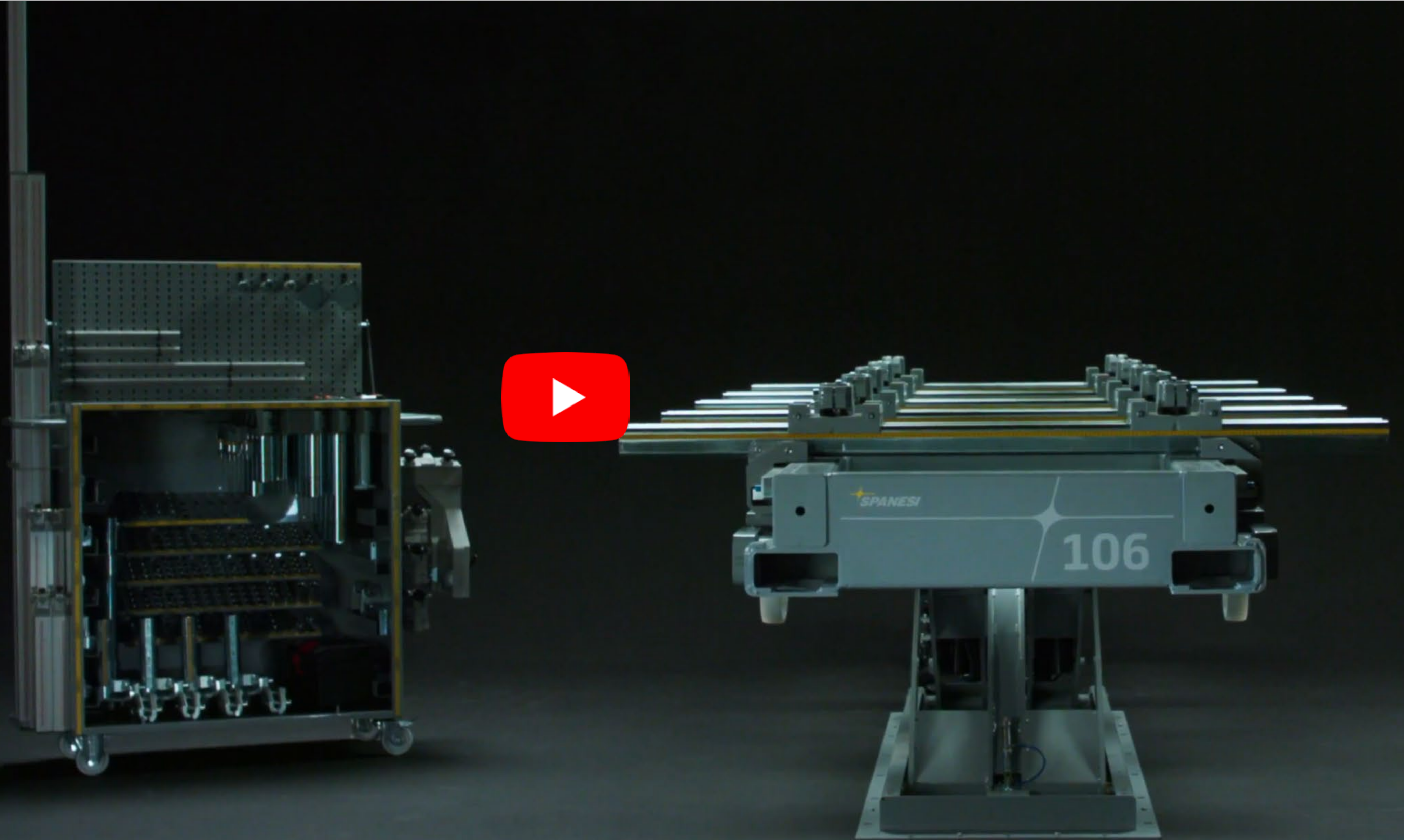
TOUCH - FOCUS POINTS VIDEO	4
106/UNIVERSAL JIG - FOCUS POINTS VIDEO	5
ELECTRA LIGHT	6
GIOTTO 7,5KW	7
GIOTTO 11 KW	8
MICHELANGELO	9
EINSTEIN (1)	10
EINSTEIN (2)	11
MIXING BOX	12
PICASSO	13
INDUSTRIAL SPRAY BOOTH	14
DAYTONA PLUS	15
106	16
106 EXT	17
TOUCH 4.0	18
MINIBENCH MAXI PLUS	19
MINIECO	20
PONYBENCH	21
MULTIBENCH P6	22
14500A	23
Q5.2	24
ALUMINUM BAY	25
TWISTER 6M	26
TYPHOON-4B	27
VACUUM	28
TURBO PLUS	29
INFRARED LAMP	30
FURNITURE	31
VAS EQUIPMENT	36

# SPANESI OEM's APPROVAL





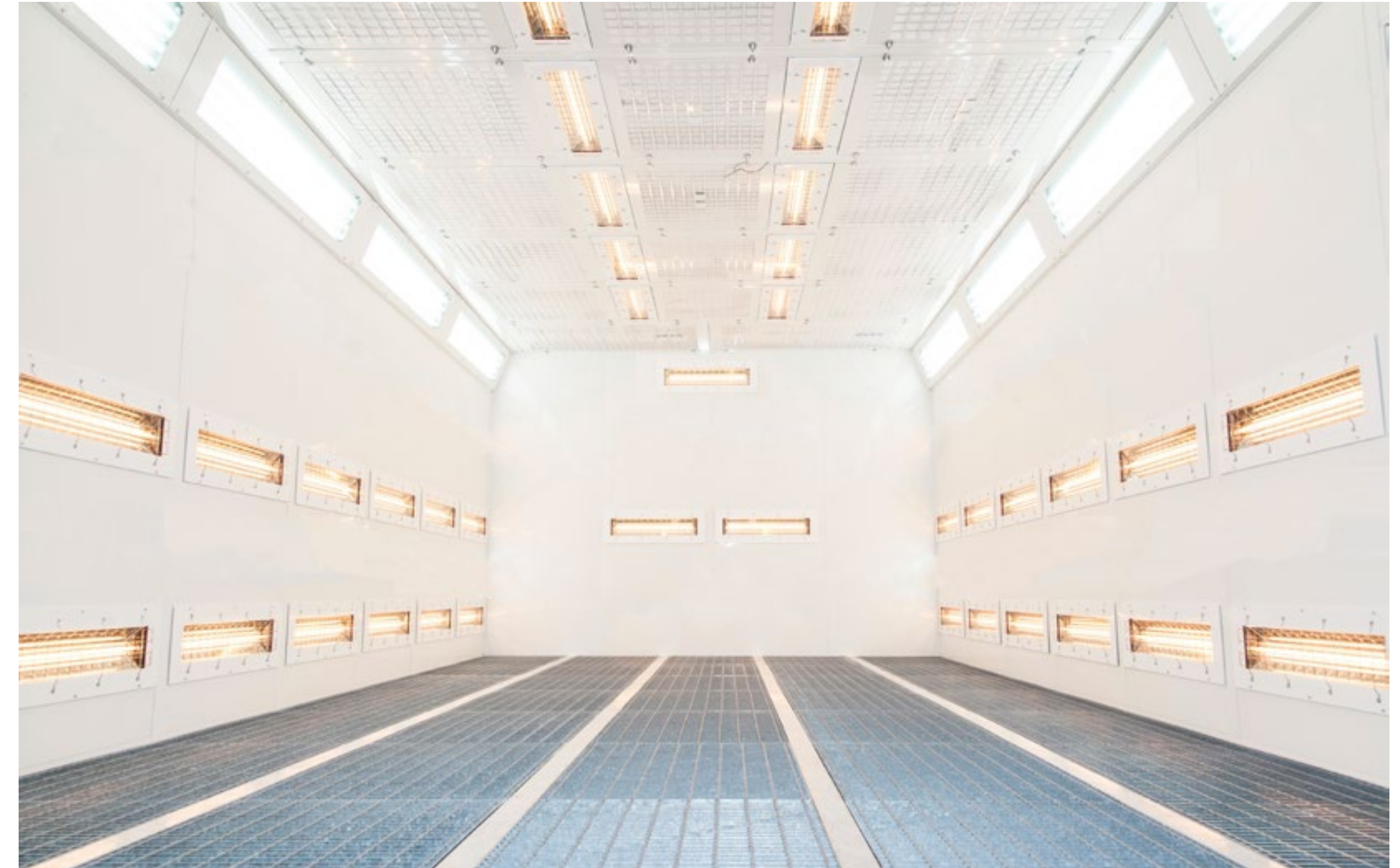






HEIGHT	2700 mm
WIDTH	4000 mm
LENGTH	7000 mm
BASEMENT	5 Lines of grated floor
LINE OF LIGHTS	2 on the top
HEATING	1 Electric Radiant Battery - 45 kW
HEAT RECOVERY	Crossed air flows system
RADIATION	39 Infrared Lamps (short-waves) - 1,5 kW each
ENGINE POWER	11 + 11 kW
NOMINAL AIR FLOW CAPACITY	34.000 m <sup>3</sup> /h
CONTROL PANEL	Touch Screen
TOTAL POWER CONSUMPTION	65 kW - 400 V 3Ph+N 50 Hz
PROTECTION CIRCUIT BREAKER	120 A - 0,3

**IN-LET/OUT-LET DUCTS AND CAPS NOT INCLUDED**



## PRIS PÅ FORESPØRSEL

- Validity of the prices: 31st December 2019
- Delivery terms: Ex Works 35010 S. Giorgio delle Pertiche, Italy (as per Incoterms® 2010)
- Payment: Advanced Bank Transfer at the order
- For any further optional bought standard conditions will be applied
- Delivery time: to be confirmed according to availability.

[BACK TO INDEX](#)

[BROCHURE](#)

[MODELS PRICE LIST](#)

## GIOTTO 7,5 kW

HEIGHT	2700 mm
WIDTH	4000 mm
LENGTH	7000 mm
BASEMENT	3 Lines of grated floor
LINE OF LIGHTS	2
BURNER	Two-stage - 200 kW
POWER	Diesel fuel G 1/4" 12 bar 21kg/h
ENGINE POWER	7,5+7,5 kW - Nominal Air Flow 25.000 m <sup>3</sup> /h
SIDE SERVICE DOOR	1
CONTROL PANEL	Electromechanic
TOTAL POWER SUPPLY	17 kW
MAGNETOTHERMIC OF PROTECTION	40A - 0,3

**IN-LET/OUT-LET DUCTS AND CAPS NOT INCLUDED**



## PRIS PÅ FORESPØRSEL

- Validity of the prices: 31st December 2019
- Delivery terms: Ex Works 35010 S. Giorgio delle Pertiche, Italy (as per Incoterms® 2010)
- Payment: Advanced Bank Transfer at the order
- For any further optional bought standard conditions will be applied
- Delivery time: to be confirmed according to availability.

[BACK TO INDEX](#)

[BROCHURE](#)

[MODELS PRICE LIST](#)



HEIGHT	2700 mm
WIDTH	4000 mm
LENGTH	7000 mm
BASEMENT	3 Lines of grated floor
LINE OF LIGHTS	2
BURNER	Two-stage - 200 kW
POWER	Diesel fuel G 1/4" 12 bar 21kg/h
ENGINE POWER	11+11kW - Nominal Air Flow 34.000 m <sup>3</sup> /h
SIDE SERVICE DOOR	1
CONTROL PANEL	Electromechanic
TOTAL POWER SUPPLY	25 kW
MAGNETOTHERMIC OF PROTECTION	63A - 0,3

**IN-LET/OUT-LET DUCTS AND CAPS NOT INCLUDED**



## PRIS PÅ FORESPØRSEL

- Validity of the prices: 31st December 2019
- Delivery terms: Ex Works 35010 S. Giorgio delle Pertiche, Italy (as per Incoterms® 2010)
- Payment: Advanced Bank Transfer at the order
- For any further optional bought standard conditions will be applied
- Delivery time: to be confirmed according to availability.

[BACK TO INDEX](#)

[BROCHURE](#)

[MODELS PRICE LIST](#)



HEIGHT	2700 mm
WIDTH	4000 mm
LENGTH	7000 mm
BASEMENT	5 Lines of grated floor
LINE OF LIGHTS	2 on the top + 2 on the bottom
BURNER	Direct flame burner - 350 kW
POWER	Natural gas G 1" 1/2 25 mbar 42,5 nm <sup>3</sup> /h
ENGINE POWER	11+11kW
SIDE SERVICE DOOR	1
CONTROL PANEL	Electronic with Display
AIR FLOW CAPACITY	34.000 m <sup>3</sup> /h
TOTAL POWER SUPPLY	26 kW
MAGNETOTHERMIC OF PROTECTION	63 A - 0,3

**IN-LET/OUT-LET DUCTS AND CAPS NOT INCLUDED**



## PRIS PÅ FORESPØRSEL

- Validity of the prices: 31st December 2019
- Delivery terms: Ex Works 35010 S. Giorgio delle Pertiche, Italy (as per Incoterms® 2010)
- Payment: Advanced Bank Transfer at the order
- For any further optional bought standard conditions will be applied
- Delivery time: to be confirmed according to availability.

[BACK TO INDEX](#)

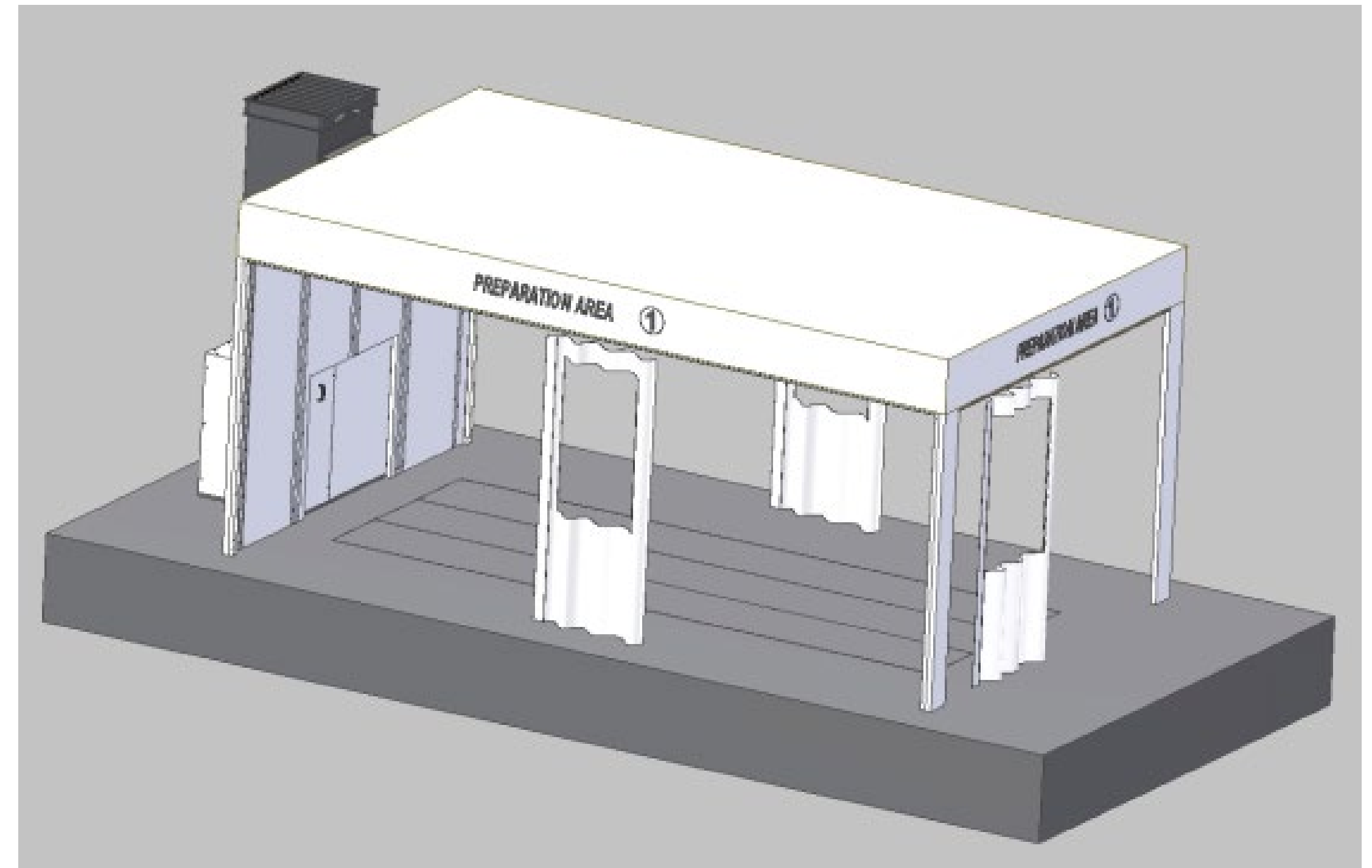
[BROCHURE](#)

[MODELS PRICE LIST](#)



USEFUL DIMENSIONS	4000 x 7000 x H 2900 mm
EXTRACTOR	Power 5,5 kW - Nominal Air Flow 22.000 m <sup>3</sup> /h
SUCTION (DOWNDRAFT)	3 lines of grated floor
POWER SUPPLY	400V 3Ph + n 50Hz
TOTAL POWER ABSORBED	7 kW
BASEMENT	15 grates and paint stop filter supports

**IN-LET/OUT-LET DUCTS AND CAPS NOT INCLUDED**



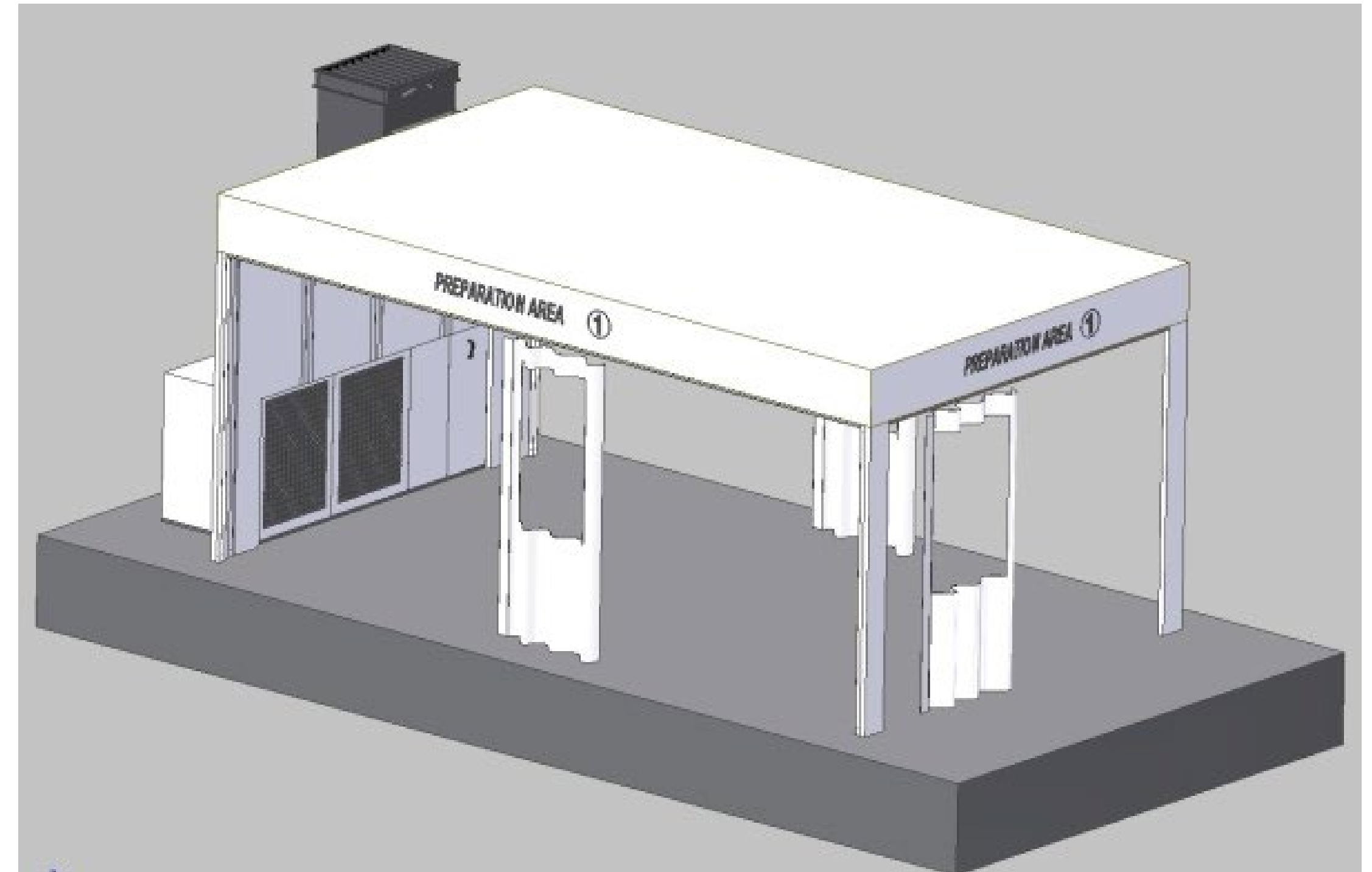
## PRIS PÅ FORESPØRSEL

- Validity of the prices: 31st December 2019
- Delivery terms: Ex Works 35010 S. Giorgio delle Pertiche, Italy (as per Incoterms® 2010)
- Payment: Advanced Bank Transfer at the order
- For any further optional bought standard conditions will be applied
- Delivery time: to be confirmed according to availability.



USEFUL DIMENSIONS	4000 x 7000 x H 2900 mm
EXTRACTOR	Power 5,5 kW - Capacity 22.000 m <sup>3</sup> /h
SUCTION (SEMI-DOWNDRAFT)	by means of rear suction wall
POWER SUPPLY	400V 3Ph + n 50Hz
TOTAL POWER ABSORBED	7 kW

**IN-LET/OUT-LET DUCTS AND CAPS NOT INCLUDED**



## PRIS PÅ FORESPØRSEL

- Validity of the prices: 31st December 2019
- Delivery terms: Ex Works 35010 S. Giorgio delle Pertiche, Italy (as per Incoterms® 2010)
- Payment: Advanced Bank Transfer at the order
- For any further optional bought standard conditions will be applied
- Delivery time: to be confirmed according to availability.



USEFUL DIMENSIONS	3000 x 2000 x H 2700 mm
SUCTION	by means of rear suction wall
POWER SUPPLY	400V 3Ph + n 50Hz
TOTAL POWER ABSORBED	7kW
LIGHT FIXTURE	1 x 3 neon tubes - 30W each
ACCESS	Hinged door with glazed window

**IN-LET/OUT-LET DUCTS AND CAPS NOT INCLUDED**



## PRIS PÅ FORESPØRSEL

- Validity of the prices: 31st December 2019
- Delivery terms: Ex Works 35010 S. Giorgio delle Pertiche, Italy (as per Incoterms® 2010)
- Payment: Advanced Bank Transfer at the order
- For any further optional bought standard conditions will be applied
- Delivery time: to be confirmed according to availability.



**3 METERS OPEN CABIN SUPPLIED WITH:**

ANDREA FILTER

SWITCHBOARD

COMPRESSED AIR FILTER REGULATOR

1 CEILING LIGHT WITH 2 NEON LAMPS 58 W

**PRIS PÅ FORESPØRSEL**

- Validity of the prices: 31st December 2019
- Delivery terms: Ex Works 35010 S. Giorgio delle Pertiche, Italy (as per Incoterms® 2010)
- Payment: Advanced Bank Transfer at the order
- For any further optional bought standard conditions will be applied
- Delivery time: to be confirmed according to availability.



**HIGH CUSTOMIZATION**



**PRIS PÅ FORESPØRSEL**

- Validity of the prices: 31st December 2019
- Delivery terms: Ex Works 35010 S. Giorgio delle Pertiche, Italy (as per Incoterms® 2010)
- Payment: Advanced Bank Transfer at the order
- For any further optional bought standard conditions will be applied
- Delivery time: to be confirmed according to availability.

[BACK TO INDEX](#)

[BROCHURE](#)

[MODELS PRICE LIST](#)

### SINGLE DAYTONA SYSTEM INFLOOR WITH ONE DAYTONA INFLOOR SINGLE RING COMPLETE WITH:

BENCH(5m) FURNISHED WITH SCISSOR ELECTRO HYDRAULIC LIFT(5000kg, H 1600mm)

CONTROL BOX 400V 50Hz 3Ph

no.3 PULLING COLUMN WITH PULLING KIT 10T

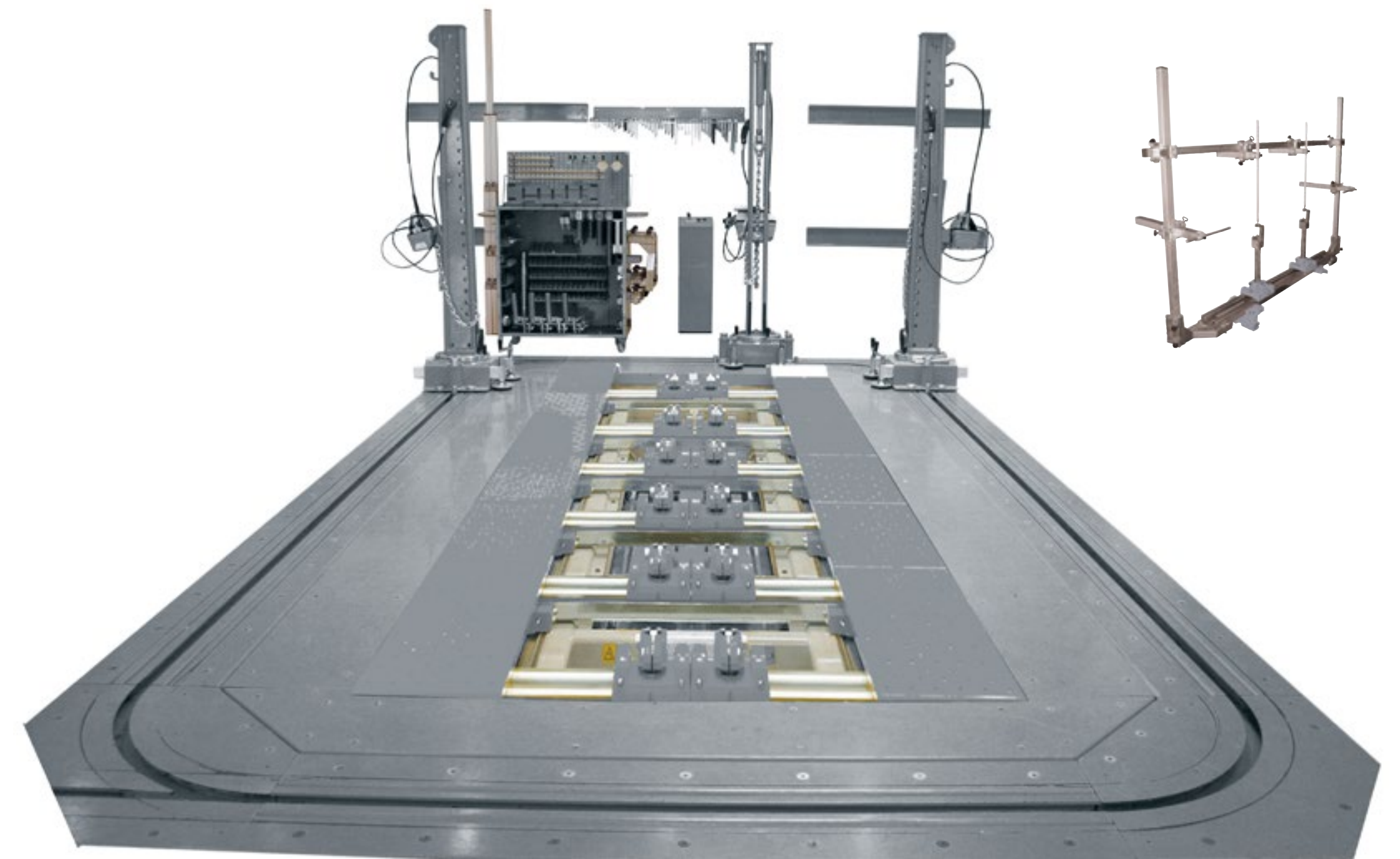
UNIVERSAL JIG WITH no.6 CROSSBARS(length 1800mm) AND no.12 SLIDING SUPPORTS

JIG TROLLEY WITH ACCESSORIES AND USB "WINSTAR"

RACKS KIT, RAMPS AND POSITIONING PLATFORMS INFLOOR TYPE

MCPHERSON MEASURING SYSTEM FOR SHOCK ABSORBER

4 COUNTER PULLING CHAINS WITH LOCKING RINGS GUIDE



## PRIS PÅ FORESPØRSEL

- Validity of the prices: 31st December 2019
- Delivery terms: Ex Works 35010 S. Giorgio delle Pertiche, Italy (as per Incoterms® 2010)
- Payment: Advanced Bank Transfer at the order
- For any further optional bought standard conditions will be applied
- Delivery time: to be confirmed according to availability.



**BENCH 5m LENGTH FURNISHED WITH:**

SCISSOR ELECTRO HYDRAULIC LIFT (5000kg, H 1600mm)

CONTROL BOX 400V 50Hz 3Ph

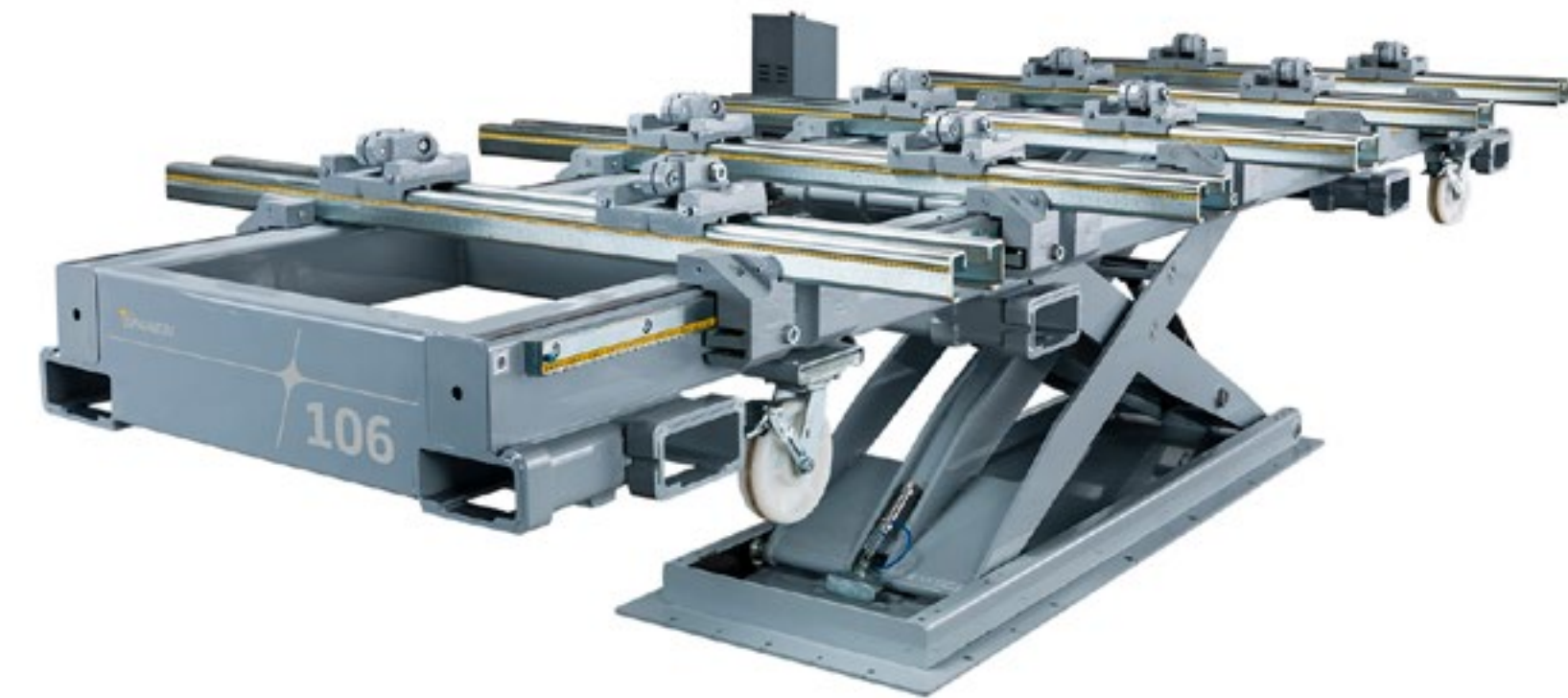
PULLING COLUMN WITH PULLING KIT 10T

UNIVERSAL JIG WITH no.6 CROSSBARS(length 1800mm) AND no.10 SLIDING SUPPORTS

JIG TROLLEY WITH ACCESSORIES AND USB "WINSTAR"

RACKS KIT, RAMPS AND POSITIONING PLATFORMS

MCPHERSON MEASURING SYSTEM FOR SHOCK ABSORBER

**PRIS PÅ FORESPØRSEL**

- Validity of the prices: 31st December 2019
- Delivery terms: Ex Works 35010 S. Giorgio delle Pertiche, Italy (as per Incoterms® 2010)
- Payment: Advanced Bank Transfer at the order
- For any further optional bought standard conditions will be applied
- Delivery time: to be confirmed according to availability.

**BENCH 6m LENGTH FURNISHED WITH:**

SCISSOR ELECTRO HYDRAULIC LIFT (5000kg, H 1000mm)

CONTROL BOX 400V 50Hz 3Ph

PULLING COLUMN WITH PULLING KIT 10T

UNIVERSAL JIG WITH no.6 CROSSBARS(length 1800mm) AND no.14 SLIDING SUPPORTS

JIG TROLLEY WITH ACCESSORIES AND USB "WINSTAR"

RACKS KIT, RAMPS AND POSITIONING PLATFORMS

MCPHERSON MEASURING SYSTEM FOR SHOCK ABSORBER

**PRIS PÅ FORESPØRSEL**

- Validity of the prices: 31st December 2019
- Delivery terms: Ex Works 35010 S. Giorgio delle Pertiche, Italy (as per Incoterms® 2010)
- Payment: Advanced Bank Transfer at the order
- For any further optional bought standard conditions will be applied
- Delivery time: to be confirmed according to availability.



**SPEED AND FUNCTIONALITY**

The Touch Electronic Measuring System facilitates the measuring and damage analysis within just a few minutes. By employing measuring probes of different lengths, the Touch is the only measuring system available that can reach the most complex measurement points of the vehicle body, including the external and mechanical parts.

**PRECISION AND ACCURACY**

During diagnostic procedures, the vehicle damage is analyzed and documented in order to create an accurate repair plan. Post vehicle repair measurements ensure the vehicle is returned to OEM repair standards.

**LIVE REPAIR INFORMATION**

The innovative “follow-me” kit guides the user, in real time, to align measured points correctly, thus making the structural straightening work accurate and efficient.

**COMPLETE VEHICLE DATABASE**

Vehicle datasheets are continuously added and updated to the published databases; therefore, the user has the latest vehicle information available.

**LARGE AND COMMERCIAL VEHICLES**

The Touch facilitates the diagnosis and repair of trucks, vans and SUV's, as well as, commercial vehicles.

**PRIS PÅ FORESPØRSEL**

- Validity of the prices: 31st December 2019
- Delivery terms: Ex Works 35010 S. Giorgio delle Pertiche, Italy (as per Incoterms® 2010)
- Payment: Advanced Bank Transfer at the order
- For any further optional bought standard conditions will be applied
- Delivery time: to be confirmed according to availability.

**MINIBENCH MAXI PLUS (CAPACITY 3500kg) WITH:**

REAR FRONT PULLING COLUMN INSERTION

ELECTROHYDRAULIC SCISSOR LIFT (H 1600mm)

n.4 SLIDING LATERAL PLATFORMS

n.4 SUPPORT BUFFERS

CONTROL BOX 400V 50Hz 3Ph 1,5kW

PULLING COLUMN WITH PNEUMO-HYDRAULIC PUMP, PISTON, CHAIN AND HOOK

KIT OF n.4 CLAMPS

**PRIS PÅ FORESPØRSEL**

- Validity of the prices: 31st December 2019
- Delivery terms: Ex Works 35010 S. Giorgio delle Pertiche, Italy (as per Incoterms® 2010)
- Payment: Advanced Bank Transfer at the order
- For any further optional bought standard conditions will be applied
- Delivery time: to be confirmed according to availability.



**MINIECO LIFT WITH:**

PNEUMO-HYDRAULIC CONTROL PUMP

OPENING/CLOSING ARMS

PNEUMATIC CONTROL BOX

n.4 SUPPORT PADS

LIFTING UP 1250mm - CAPACITY 2.200kg

**PRIS PÅ FORESPØRSEL**

- Validity of the prices: 31st December 2019
- Delivery terms: Ex Works 35010 S. Giorgio delle Pertiche, Italy (as per Incoterms® 2010)
- Payment: Advanced Bank Transfer at the order
- For any further optional bought standard conditions will be applied
- Delivery time: to be confirmed according to availability.

**PONYBENCH BT PLUS WITH:**

AUTOMATIC OPENING/CLOSING ARMS

ELECTRO-HYDRAULIC LIFT ARRANGED TO PULL

CAPACITY 3.000kg - H 1.710m

n.4 SUPPORT BUFFERS

CONTROL BOX 400V 50Hz 3Ph

KIT LOW TURNING CLAMPS

PULLING COLUMN WITH PNEUMO-HYDRAULIC PUMP, PISTON, CHAIN AND HOOK

**PRIS PÅ FORESPØRSEL**

- Validity of the prices: 31st December 2019
- Delivery terms: Ex Works 35010 S. Giorgio delle Pertiche, Italy (as per Incoterms® 2010)
- Payment: Advanced Bank Transfer at the order
- For any further optional bought standard conditions will be applied
- Delivery time: to be confirmed according to availability.



**MULTIBENCH PACK 6 WITH:**

LIFTING HEIGHT 1600 mm - CAPACITY 3000 kg

CONTROL BOX 400V 50Hz 3Ph

PULLING COLUMN WITH PUMP 450bar, 10T PISTON, CHAIN AND HOOK

no.12 LOW MULTIBENCH PLATFORM LONG

COMPLETE SET OF UNIVERSAL FIXTURE WITH CART

KIT OF SPECIAL SCREWS COMPLETE WITH SHELVES

STIRRUPS KIT

no.4 COMPLETE SLIDING CASE mod.1313 FOR CROSSBARS

COMPLETE SPANNER KIT FOR JIG

KIT OF LOW STIRRUPS WITH CLAMPS AND STIRRUPS FOR SUV (NO BUFFER) WITH RACK AND UPRIGHTS

COUPLE OF CROSSBARS 1400mm FOR CLAMPS AND 1190mm AND 1875mm SUPPORT FOR SLIDING CROSSBARS CLAMPS

no.1 KIT OF 4 TRIPOD-CARTS (3 WHEELS) h1250 FOR MULTIBENCH, WITH NO BLOCKING TAMPONS TO FLOOR, MAX CAPACITY tot. 3000kg

KIT OF HIGH STIRRUPS WITH BUFFERS AND CHAINS FOR COUNTER-PULLING (NO CLAMPS) WITH RACK, FOR USE WITH "TOUCH"/WHEELS REMOVAL

**PRIS PÅ FORESPØRSEL**

- Validity of the prices: 31st December 2019
- Delivery terms: Ex Works 35010 S. Giorgio delle Pertiche, Italy (as per Incoterms® 2010)
- Payment: Advanced Bank Transfer at the order
- For any further optional bought standard conditions will be applied
- Delivery time: to be confirmed according to availability.

**14500A (400V 3Ph+ground 50Hz) WATER COOLED WITH:**

AUTOMATIC THICKNESS RECOGNITION

CART

"C" GUN 560dan - 7bar

n.6 ARMS

ELECTRODES

**PRIS PÅ FORESPØRSEL**

- Validity of the prices: 31st December 2019
- Delivery terms: Ex Works 35010 S. Giorgio delle Pertiche, Italy (as per Incoterms® 2010)
- Payment: Advanced Bank Transfer at the order
- For any further optional bought standard conditions will be applied
- Delivery time: to be confirmed according to availability.



**SYNERGIC INVERTER MIG/MAG WELDING MACHINE WITH:**

3 TORCHES: STEEL, SILICON BRONZE, ALUMINUM

OPTIONAL: MMA AND TIG DC ATTACHMENTS

**PRIS PÅ FORESPØRSEL**

- Validity of the prices: 31st December 2019
- Delivery terms: Ex Works 35010 S. Giorgio delle Pertiche, Italy (as per Incoterms® 2010)
- Payment: Advanced Bank Transfer at the order
- For any further optional bought standard conditions will be applied
- Delivery time: to be confirmed according to availability.



EXTERNAL HEIGHT	3,80m
INTERNAL HEIGHT	3,54m
EXTERNAL WIDTH	5,10m
INTERNAL WIDTH	5,00m
EXTERNAL LENGTH	8,10m
INTERNAL LENGTH	8,00m

**SINGLE FRONTAL WITH 4 WINGS WITH "MAXI" GLAZED WINDOWS (USEFUL PASSAGE: WIDTH 3,6m - H 3,51m).  
SELF-SUPPORTING STRUCTURE BY GALVANIZED PREVARNISHED WHITE RAL 9003 SHEET "SANDWICH" TYPE  
WITH INSULATION WITH GLASS WOOL.  
THICKNESS 52mm**



## PRIS PÅ FORESPØRSEL

- Validity of the prices: 31st December 2019
- Delivery terms: Ex Works 35010 S. Giorgio delle Pertiche, Italy (as per Incoterms® 2010)
- Payment: Advanced Bank Transfer at the order
- For any further optional bought standard conditions will be applied
- Delivery time: to be confirmed according to availability.



**VACUUM SYSTEM MOD. TWISTER (230V 50/60Hz) WITH:**

AUTOMATIC FILTER CLEANING

n.1 ARTICULATED ARM - 6m WITH PLATE TO BE FIXED ON WALL

DISTRIBUTOR BOX WITH ELECTRIC SOCKETS, VACUUM HOSES AND COMPRESSED AIR JOINTS 230V 16A

PNEUMATIC DEVICE WITH 4 ANI CONNECTIONS

**PRIS PÅ FORESPØRSEL**

- Validity of the prices: 31st December 2019
- Delivery terms: Ex Works 35010 S. Giorgio delle Pertiche, Italy (as per Incoterms® 2010)
- Payment: Advanced Bank Transfer at the order
- For any further optional bought standard conditions will be applied
- Delivery time: to be confirmed according to availability.

## 3B

ELECTRIC MOTOR POWER	3 kW
NOMINAL AIR SUPPLY	300 m <sup>3</sup> /h
FILTERING SURFACE	0,57 m <sup>2</sup>
DIFFERENTIAL PRESSURE	1600mm H <sub>2</sub> O
MOTOR	n. 01
HEIGHT	1110 mm
WIDTH	760 mm
LENGTH	920 mm
WEIGHT	170 kg



## 4B

ELECTRIC MOTOR POWER	5,5 kW
NOMINAL AIR SUPPLY	500 m <sup>3</sup> /h
FILTERING SURFACE	2,7 m <sup>2</sup>
DIFFERENTIAL PRESSURE	1600mm H <sub>2</sub> O
MOTOR	n. 01
HEIGHT	1610 mm
WIDTH	760 mm
LENGTH	920 mm
WEIGHT	256 kg



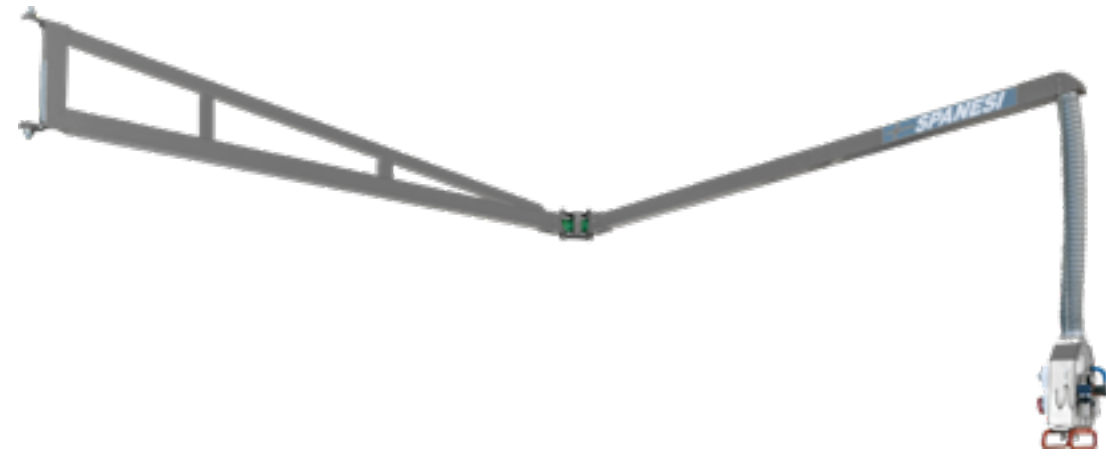
**PRIS PÅ FORESPØRSEL**

- Validity of the prices: 31st December 2019
- Delivery terms: Ex Works 35010 S. Giorgio delle Pertiche, Italy (as per Incoterms® 2010)
- Payment: Advanced Bank Transfer at the order
- For any further optional bought standard conditions will be applied
- Delivery time: to be confirmed according to availability.

**PRIS PÅ FORESPØRSEL**



6m ARM



ARTICULATED ARM LENGTH 6m

SPECIAL PLATE TO BE FIXED ON WALL

INTEGRATED DISTRIBUTOR "PITAGORA"

DIFFERENTIAL PRESSURE

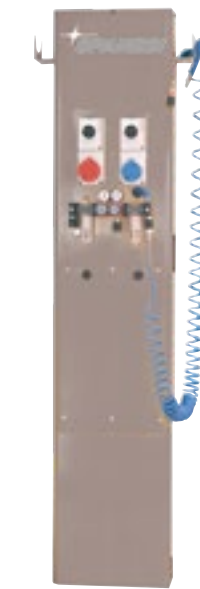
PITAGORA



DISTRIBUTOR BOX WITH ELECTRIC SOCKETS

PNEUMATIC DEVICE WITH no.04 ANI CONNECTIONS

TRIAL



DISTRIBUTOR COLUMN MOD. TRIAL 230/400V 16A 4 POLES

PNEUMATIC DEVICE WITH no.04 ANI CONNECTIONS

**PRIS PÅ FORESPØRSEL**

**PRIS PÅ FORESPØRSEL**

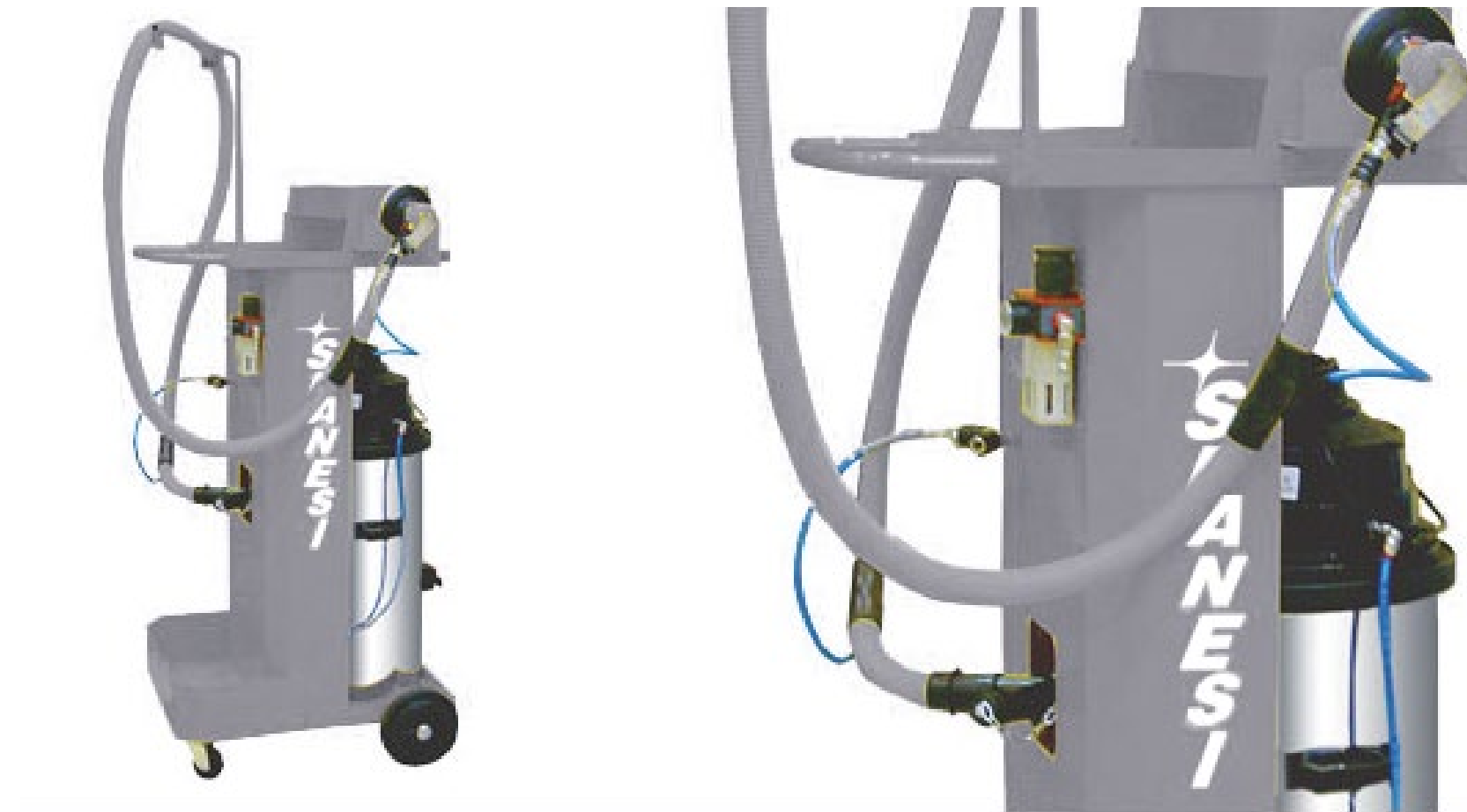
**PRIS PÅ FORESPØRSEL**

- Validity of the prices: 31st December 2019
- Delivery terms: Ex Works 35010 S. Giorgio delle Pertiche, Italy (as per Incoterms® 2010)
- Payment: Advanced Bank Transfer at the order
- For any further optional bought standard conditions will be applied
- Delivery time: to be confirmed according to availability.

[BACK TO INDEX](#)

[BROCHURE](#)

## SAND PAPERING MOBILE SYSTEM TURBO PLUS WITH SEMIAUTOMATIC CLEANING



OPTIONAL



**SP767032 2,5mm**

Palm sander



**90SF0113 - 5m ANI**  
**90SF0115 - 6m ANI**  
Flexible air tube Ø 29

## PRIS PÅ FORESPØRSEL

- Validity of the prices: 31st December 2019
- Delivery terms: Ex Works 35010 S. Giorgio delle Pertiche, Italy (as per Incoterms® 2010)
- Payment: Advanced Bank Transfer at the order
- For any further optional bought standard conditions will be applied
- Delivery time: to be confirmed according to availability.

[BACK TO INDEX](#)

[BROCHURE](#)



**MAREA ECO LAMP 3 PANEL, SHORT WAVES:**

230 V - 50/60Hz

NOMINAL ELECTRIC POWER 3x1300W (WHITE CANDLES)

ELECTRONIC CONTROL BOX

WITH PYROMETER, TROLLEY AND WHEELS

**PRIS PÅ FORESPØRSEL**

- Validity of the prices: 31st December 2019
- Delivery terms: Ex Works 35010 S. Giorgio delle Pertiche, Italy (as per Incoterms® 2010)
- Payment: Advanced Bank Transfer at the order
- For any further optional bought standard conditions will be applied
- Delivery time: to be confirmed according to availability.

LOUNGE CHAIR



**PRIS PÅ FORESPØRSEL**

- Validity of the prices: 31st December 2019
- Delivery terms: Ex Works 35010 S. Giorgio delle Pertiche, Italy (as per Incoterms® 2010)
- Payment: Advanced Bank Transfer at the order
- For any further optional bought standard conditions will be applied
- Delivery time: to be confirmed according to availability.

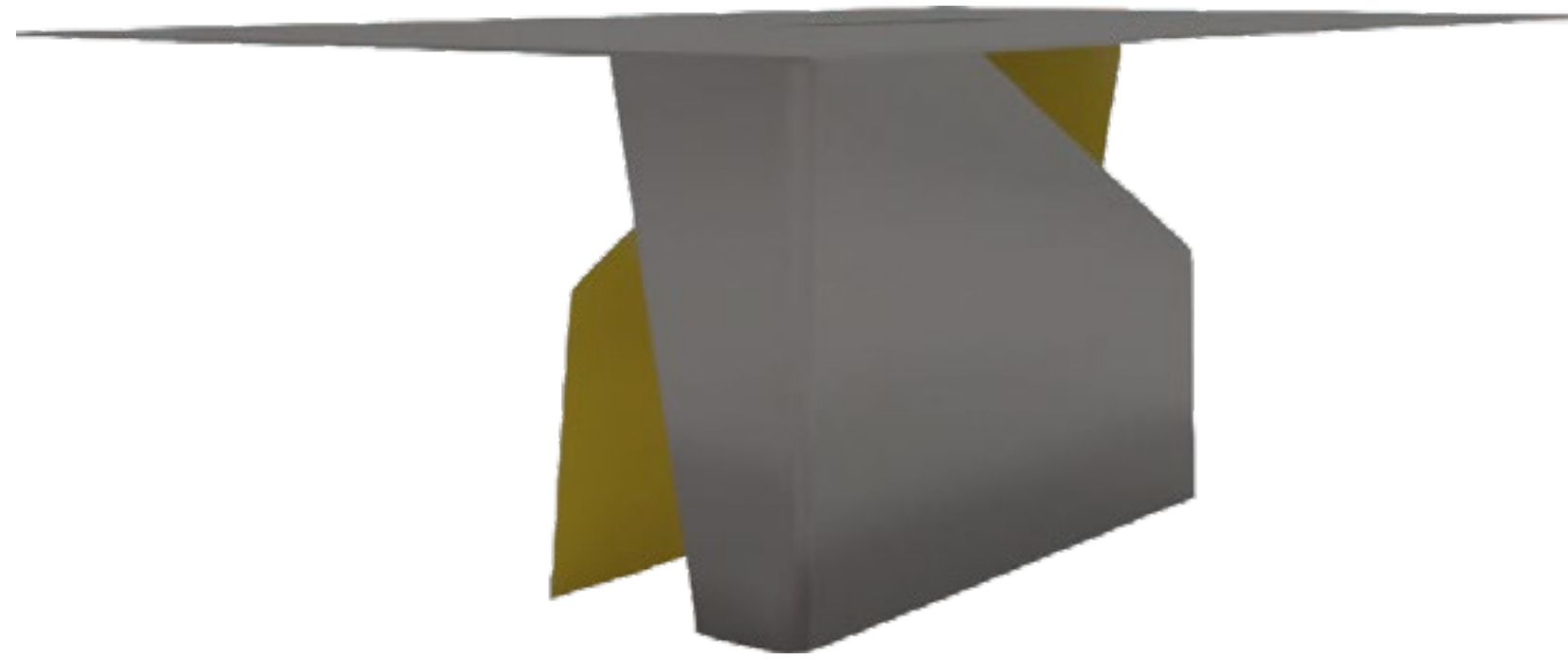
LOUNGE TABLE



**PRIS PÅ FORESPØRSEL**



CONFERENCE TABLE



**PRIS PÅ FORESPØRSEL**

- Validity of the prices: 31st December 2019
- Delivery terms: Ex Works 35010 S. Giorgio delle Pertiche, Italy (as per Incoterms® 2010)
- Payment: Advanced Bank Transfer at the order
- For any further optional bought standard conditions will be applied
- Delivery time: to be confirmed according to availability.

STORAGE CABINET

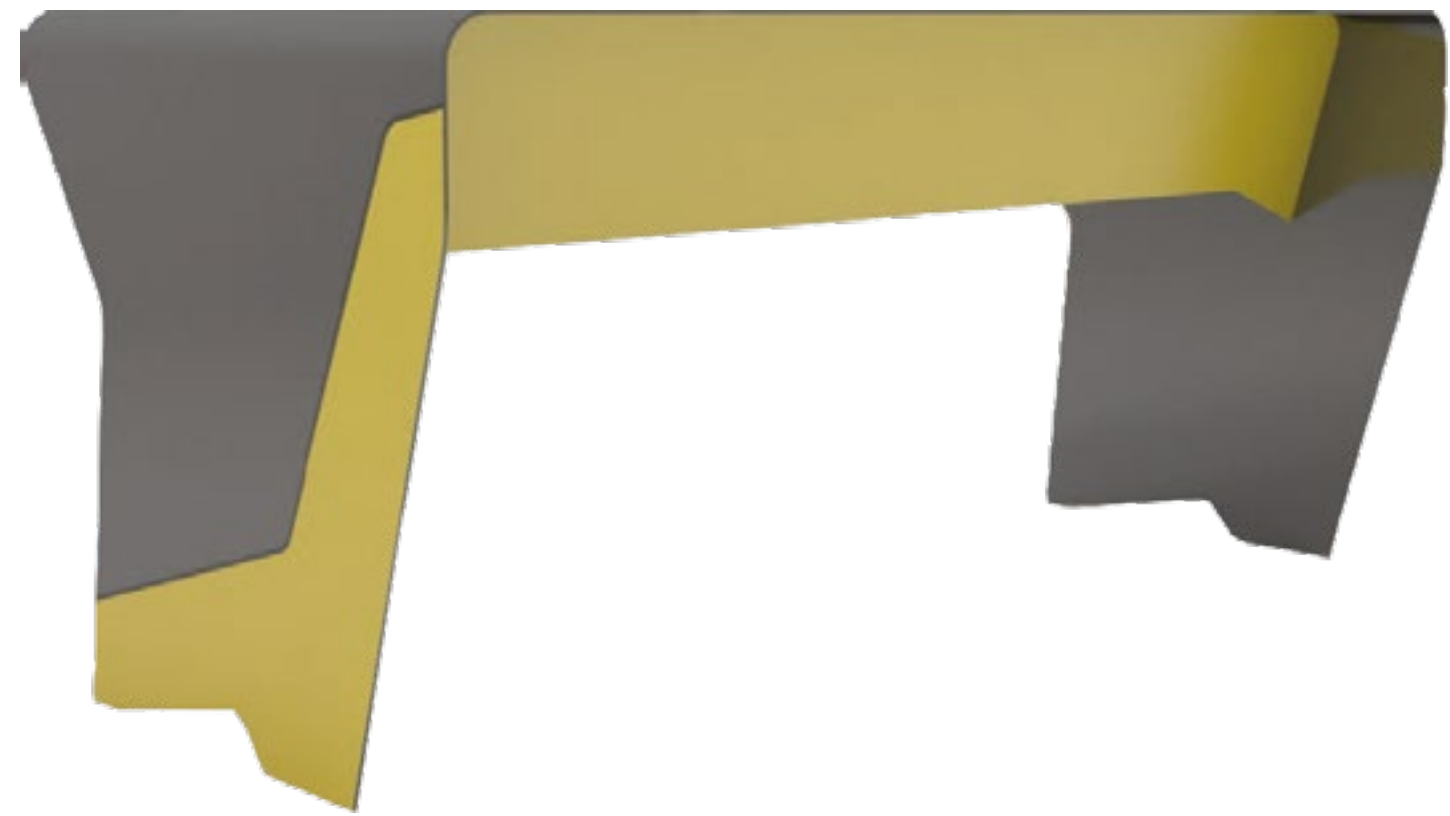


**PRIS PÅ FORESPØRSEL**

[BACK TO INDEX](#)

SPANESI 360 CONCEPT

DESK



**PRIS PÅ FORESPØRSEL**

- Validity of the prices: 31st December 2019
- Delivery terms: Ex Works 35010 S. Giorgio delle Pertiche, Italy (as per Incoterms® 2010)
- Payment: Advanced Bank Transfer at the order
- For any further optional bought standard conditions will be applied
- Delivery time: to be confirmed according to availability.

HIGH STORAGE CABINET



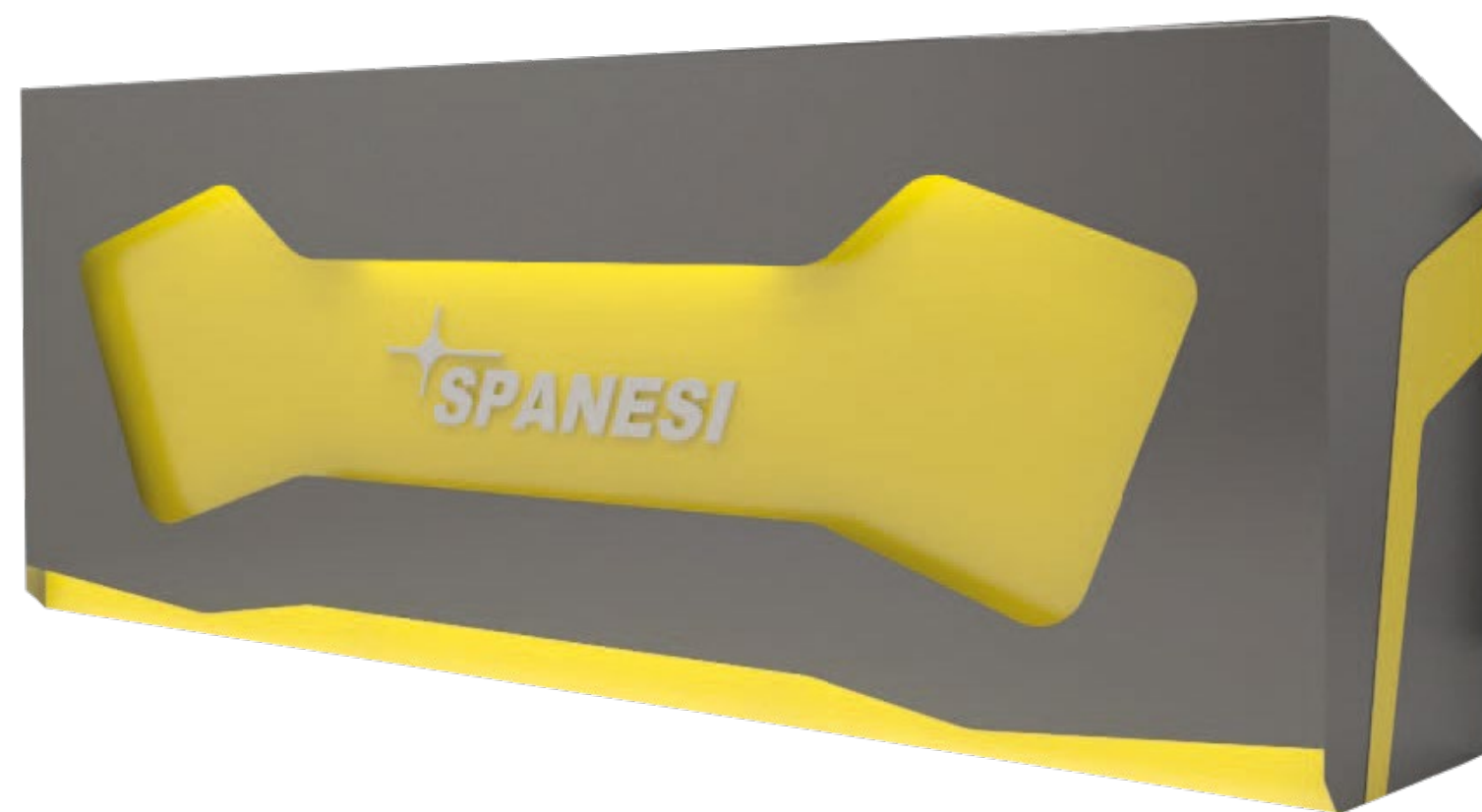
**PRIS PÅ FORESPØRSEL**

[BACK TO INDEX](#)

SPANESI 360 CONCEPT



RECEPTION DESK



**PRIS PÅ FORESPØRSEL**

- Validity of the prices: 31st December 2019
- Delivery terms: Ex Works 35010 S. Giorgio delle Pertiche, Italy (as per Incoterms® 2010)
- Payment: Advanced Bank Transfer at the order
- For any further optional bought standard conditions will be applied
- Delivery time: to be confirmed according to availability.

WASTE BASKET



**PRIS PÅ FORESPØRSEL**

[BACK TO INDEX](#)

 SPANESI 360 CONCEPT



## PRIS PÅ FORESPØRSEL

- Validity of the prices: 31st December 2019
- Delivery terms: Ex Works 35010 S. Giorgio delle Pertiche, Italy (as per Incoterms® 2010)
- Payment: Advanced Bank Transfer at the order
- For any further optional bought standard conditions will be applied
- Delivery time: to be confirmed according to availability.




**VOLKSWAGEN**  
AKTIENGESELLSCHAFT


Alignment and measuring system  
VAS 811 017  
VAS 811 019



VOLKSWAGEN BROCHURE



Alignment and measuring system  
VAS 811 017  
VAS 811 019



PORSCHE BROCHURE



# Performance and Design